



The fully SolidWorks integrated CAM solution for 2.5D Machining as well as 3 axis surface machining, at a surprisingly affordable price from **SolidCAM - the Leaders in integrated CAM**

SolidCAM X PRESS

Includes the functions you need most:

- Pocket Milling
- Profile Milling
- Face Milling
- Drilling
- HSS High-Speed Surface Machining

just 1500EUR

SEAMLESS SINGLE WINDOW INTEGRATION ...

- Benefit from SolidCAM's single-window integration with SolidWorks and the full associativity of the CAM toolpath to the SolidWorks design model.
- Flatten the learning curve of training and implementation time with the powerful SolidWorks CAM solution that has the familiar look, feel and function of SolidWorks.
- Unleash the hidden power and potential of your SolidWorks with an unlimited upgrade path for additional Milling (3X, 4X, 5X), Turning, Mill-Turn and Wire EDM modules.

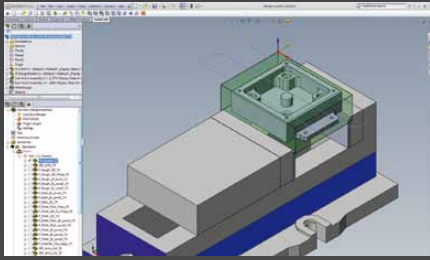
AND FULL ASSOCIATIVITY TO SOLIDWORKS

- Trust the one proven solution from the innovators of SolidWorks' integrated CAM, with 10 years of integration experience.
- Eliminate design change delays by extending Parametric modeling all the way through to your production - Design changes flow right to your machines.
- Dominate your competitors by breaking through the wall between your design and production, for the fastest way from design to prototype and production.



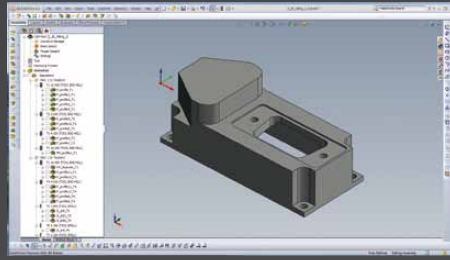
The last CAM system you will ever need to buy!

www.solidcam.com



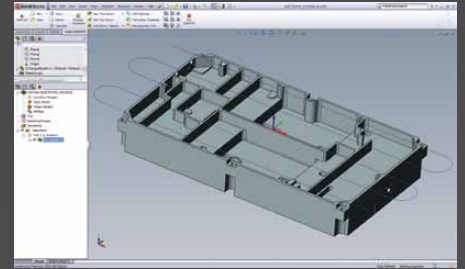
SolidWorks Parts, Assemblies, Sketches

Easily work on parts, assemblies, and sketch geometry to define your operations. Quickly place fixtures and components for full visualization. Program multiple parts using SolidWorks assembly mode.



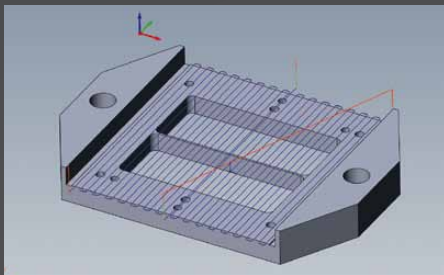
CAM-Manager

Toolpaths are stored as Operations in the CAM-Manager, where operations can be dragged & dropped to reorder toolpaths at any time. Any Operation can also be suppressed/cut/copied/pasted, following standard SolidWorks and MS Windows methodology.



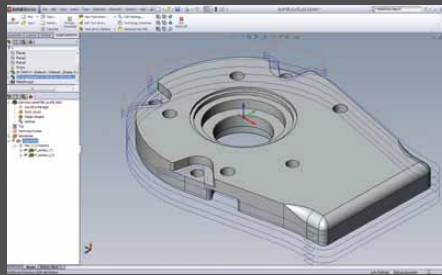
Face Milling

Easily define single or multiple pass cutting. User selection of the entire part, face(s), or sketch geometry for flexibility. Extension, overlaps, and lead in & out are automatically applied to clear the entire geometry, while plunging, retracting and step-overs are done in air.



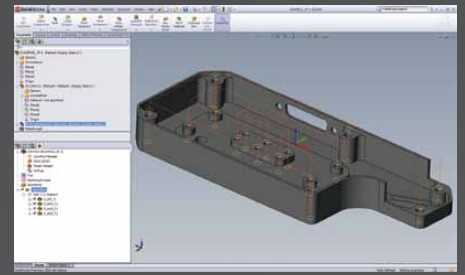
Pocket Milling

Advanced pocketing supports an unlimited number of pockets and islands. Pocket geometry can be defined as Open, Semi-open, or Closed, with or without Islands. Open and semi-open pockets replace the need for user extended geometry. Intelligent toolpaths automatically plunge in air and work to progressively shave the material away from the open edges of the pocket (zig-zag or one-way). Helical and linear ramping are applied to closed pockets.



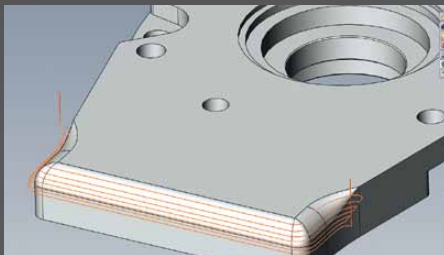
Profile Milling

Create toolpath that follows any profile in SolidWorks. Geometry can be defined as model edges, sketch entities, or intermixed. Multiple passes can be easily defined to rough away a large area. Roughing and finishing can be defined in the same operation, along with different depth of cuts. An advanced "geometry edit" allows modification (offsetting, trimming, extended, start point) without having to use SolidWorks tools.



Drilling

Easily define drill cycles for machining holes. Standard cycles include drilling, peck drilling, reaming, boring, and tapping cycles. Automatic drill location selection at arc centers and corners. Custom drill cycles can be added to support any special machining requirements.



HSS High-Speed Surface Machining

SolidCAM Xpress provides a limited set of HSS toolpath features. Linear and Constant-Z strategies give you the ability to machine 3D features on prismatic parts. Single and multiple surfaces are supported.

Focusing on the truly essential CAM programming functions, SolidCAM Xpress is a radical new concept in CAM that delivers a fully SolidWorks integrated CAM solution for 2.5D Machining as well as 3 axis surface machining functionality, at a surprisingly affordable price. Feel secure knowing that you can get the last CAM you will ever need, as SolidCAM offers an unlimited upgrade path to the most highly developed features and works with the most advanced CNC's.

**You will grow with SolidCAM,
but never outgrow SolidCAM.**



Service and Support

The most experienced, knowledgeable support team, with extensive machining experience. Our dedicated post processor team ensures SolidCAM's full compatibility with your Machine Tools. Free online SolidCAM Professor video tutorials cover all features of SolidCAM.



**The last CAM system you
will ever need to buy!**

www.solidcam.com